



# MONTHLY MEMBERSHIP PROGRESS REPORT

District 21 C

Results as of: 02/28/2019

GMT: WILLIAM PHILLIPI

LOCATION ARIZONA

GMT CA

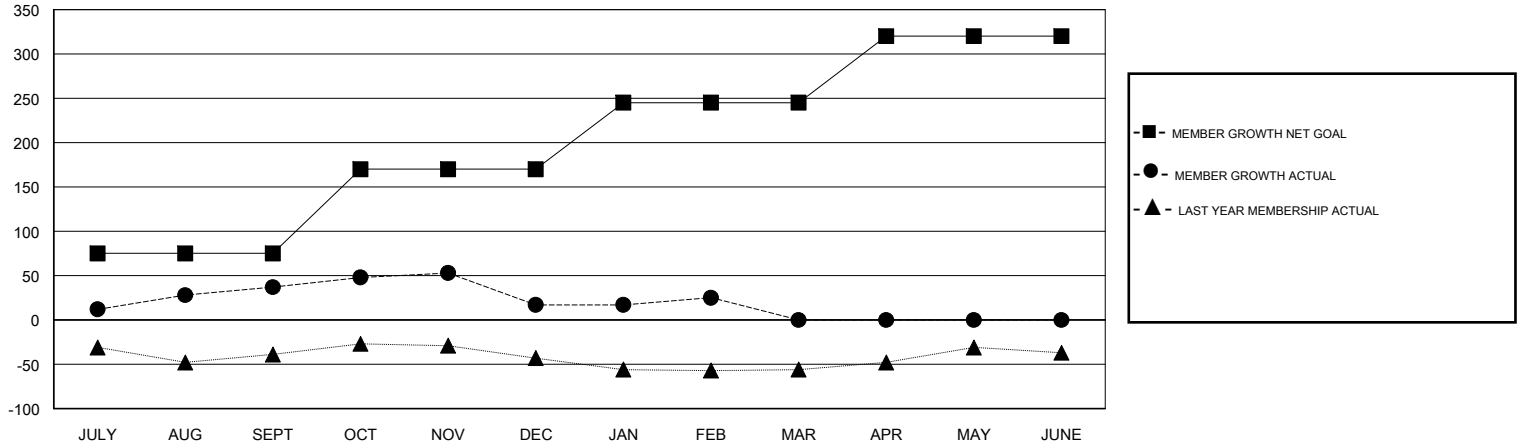
Clubs			
RESULTS FOR 2018-2019			
QUARTER	NEW CLUB GOAL	NEW CLUBS	DROPPED CLUBS
JULY/AUG/SEPT	0	0	0
OCT/NOV/DEC	1	0	0
JAN/FEB/MAR	0	0	0
APR/MAY/JUNE	0	0	0

Members			
RESULTS FOR 2018-2019			
QUARTER	MEMBER GROWTH NET GOAL	MEMBER GROWTH ACTUAL	DROPPED MEMBERS ACTUAL (including transfers)
JULY/AUG/SEPT	75	66	25
OCT/NOV/DEC	95	34	51
JAN/FEB/MAR	75	19	14
APR/MAY/JUNE	75	0	0

GOALS AND ACTUAL NEW CLUBS CUMULATIVE



GOALS AND ACTUAL MEMBERS CUMULATIVE



DROPPED CLUBS: 0
------------------

23 CLUBS OF 42 ADDED 1 OR MORE NEW MEMBERS

GENDER DISTRIBUTION	
MALE	673 (57.47%)
FEMALE	498 (42.53%)
Women Percentage Fiscal Year Goal: 55%	

DROPPED MEMBERS	
DECEASED	12
CLUB CANCELLED	0
OTHER	78
<b>TOTAL</b>	<b>90</b>

[CLICK HERE FOR CUMULATIVE MEMBERSHIP DATA](#)

TOTAL FAMILY UNIT MEMBERS	388
FAMILY MEMBERS PAYING HALF DUES	211